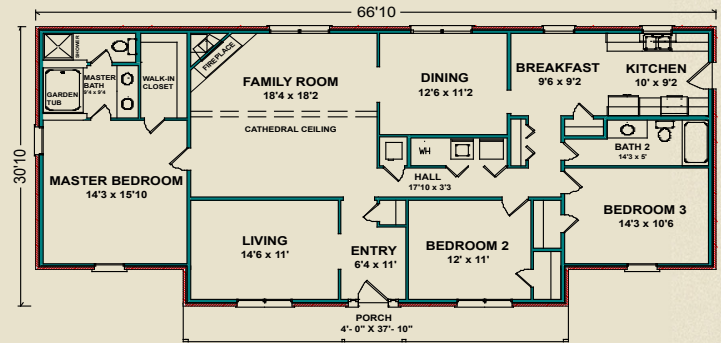




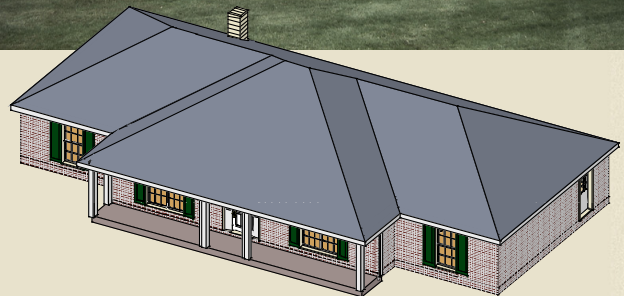
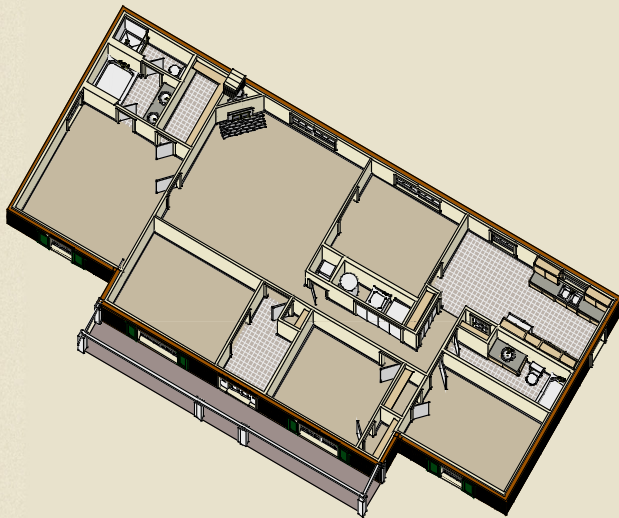
More of Everything

Charleston

The Charleston offers a plan for gracious dining and entertaining with its formal living and dining rooms. The convenient coat closet in the foyer will make guests feel welcome. The family room has an inviting corner fireplace and lofty cathedral ceiling. The open kitchen has a large breakfast area, easy access to the dining room and a convenient pantry, as well as access to the exterior for easy unloading of groceries. The master bedroom, separated from the other two for privacy, features a large walk-in closet and the master bath has a garden tub, stand-alone shower and separate vanities. The washer/dryer are closeted behind attractive bi-fold doors.



1,949 sq. ft.



Photos may include optional features.

AL
251.666.3950 | 800.489.1014

MS
228.687.1143 | 877.410.6175

FL
850.477.0006 | 866.775.0006

heritagehomesfamily.com