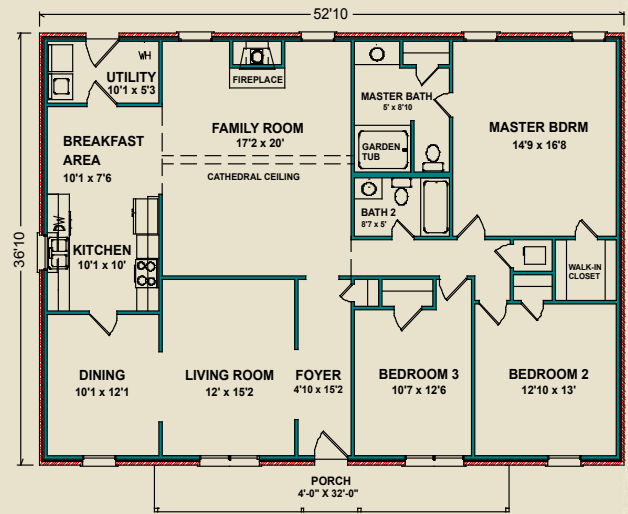




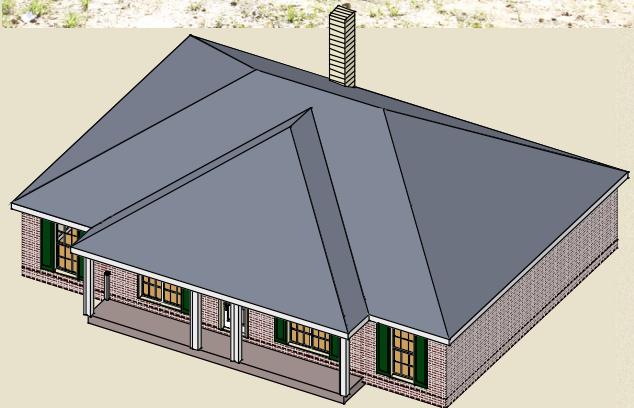
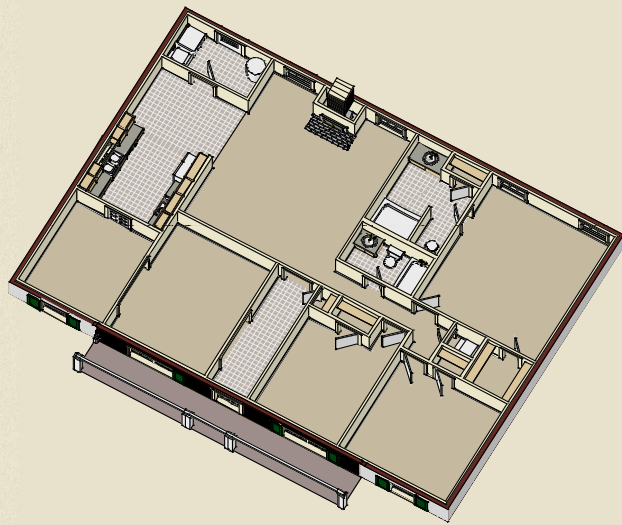
More of Everything

## Greenston

The Greenston is an elegant plan with living and dining rooms separate from the family room. The convenient doorway to the open kitchen closes to provide formal dining. The large family room has a cathedral ceiling and attractive central fireplace. The breakfast area opens to the family room, and the large utility room, with its exterior access, can serve as a convenient mudroom. The large master bedroom features a walk-in closet, and the master bath offers a garden tub and linen closet.



1,945 sq. ft.



Photos may include optional features.

AL  
251.666.3950 | 800.489.1014

MS  
228.687.1143 | 877.410.6175

FL  
850.477.0006 | 866.775.0006

[heritagehomesfamily.com](http://heritagehomesfamily.com)