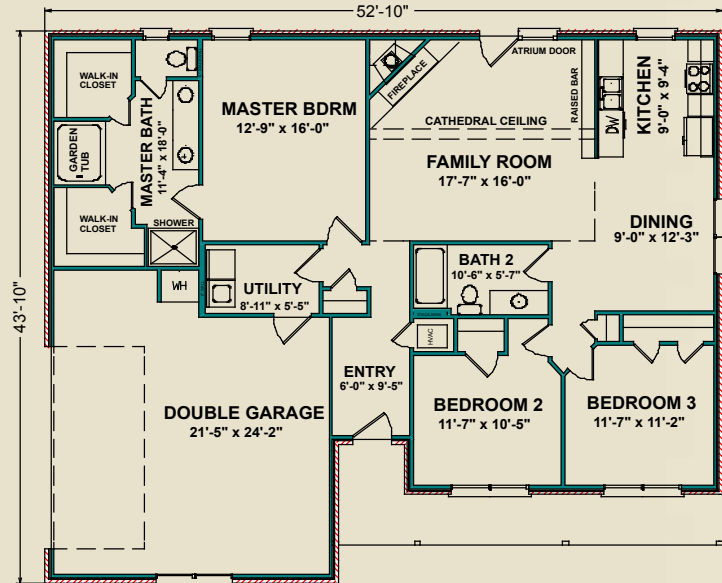


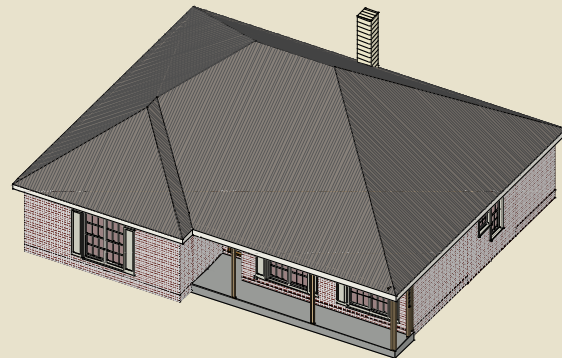
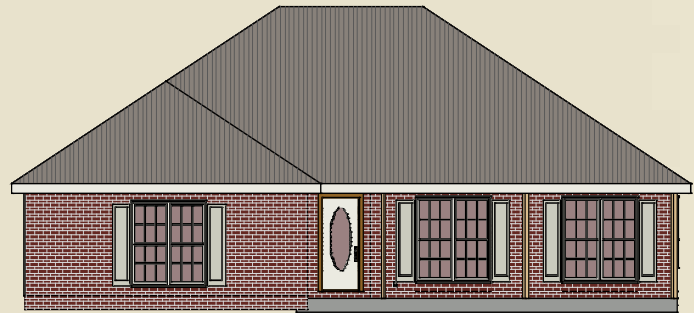
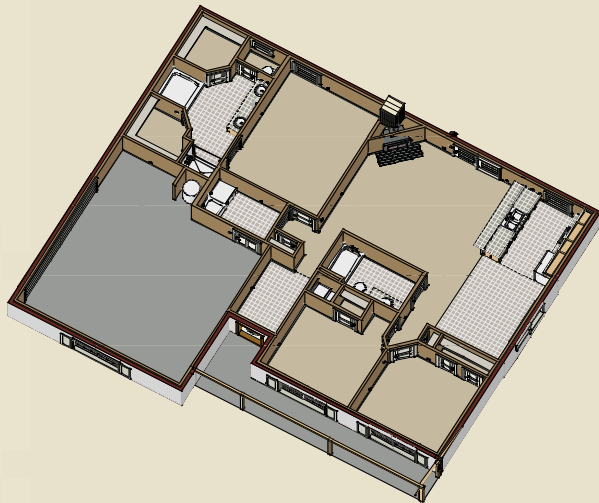


Warwick

The Warwick is perfect for your growing family—affordable and spacious. The entry opens into the family room with an impressive cathedral ceiling and fireplace. The large bar in the kitchen overlooks the family room, perfect for casual dinners and entertaining. Adjacent to the kitchen is the dining room designed with family dinners in mind. The roomy master bedroom, separated from the other two bedrooms for privacy, has his and hers walk-in closets, a garden tub, separate shower, and double vanities. The Warwick comes standard with an oversized double garage with ample room for storage and vehicles.



1,555 sq. ft.



Photos may include optional features.

AL
251.666.3950 | 800.489.1014

MS
228.687.1143 | 877.410.6175

FL
850.477.0006 | 866.775.0006

heritagehomesfamily.com