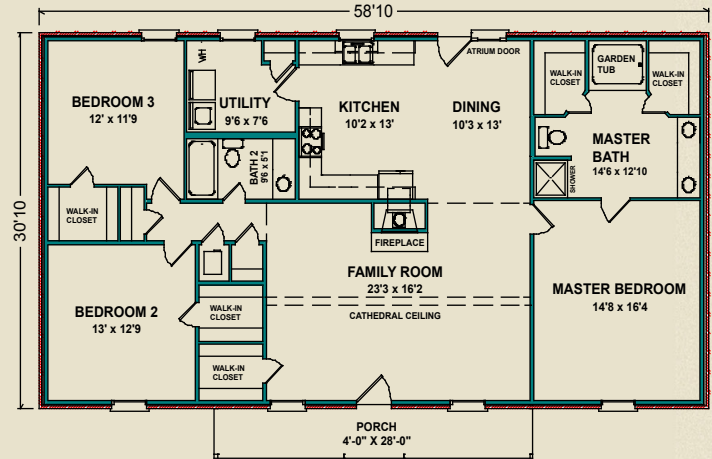




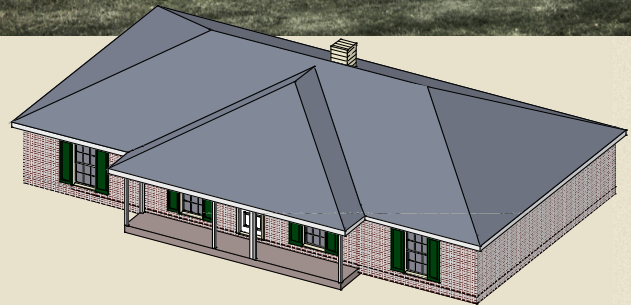
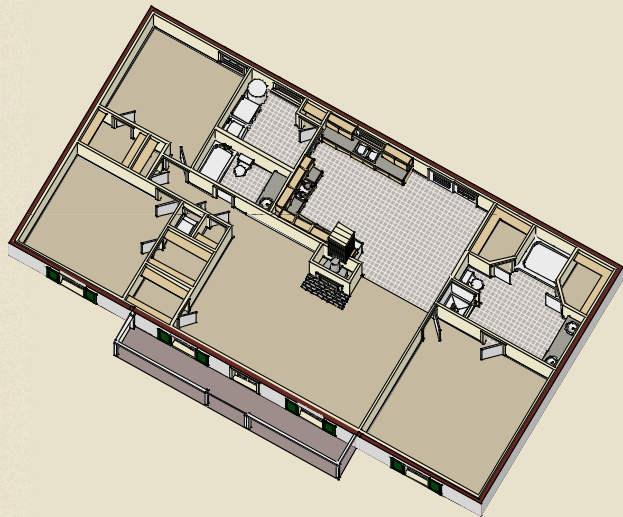
More of Everything

Classic I

The Classic I opens to a dramatic great room featuring a fireplace, cathedral ceiling and walk-in closet. The gracious kitchen plan has an adjacent utility room and pantry. The dining room, opening onto the kitchen and great room, leads to the backyard through an atrium door. The master suite features two walk-in closets, a garden tub and double sinks. The two large bedrooms also have walk-in closets.



1,813 sq. ft.



Photos may include optional features.

AL
251.666.3950 | 800.489.1014

MS
228.687.1143 | 877.410.6175

FL
850.477.0006 | 866.775.0006

heritagehomesfamily.com