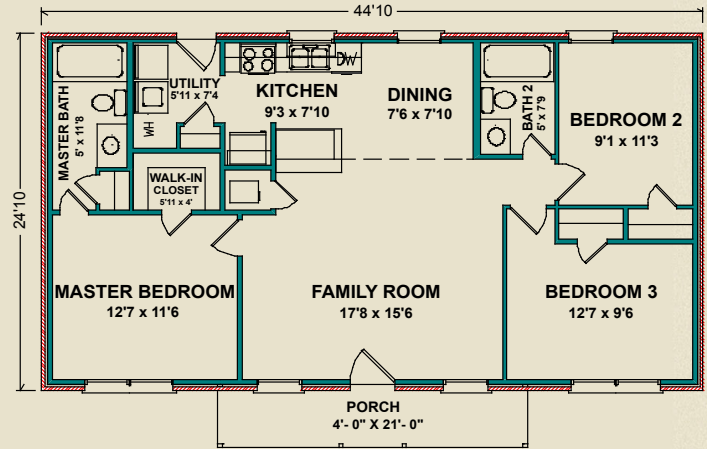




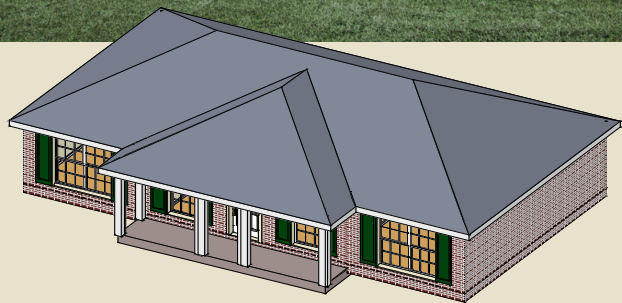
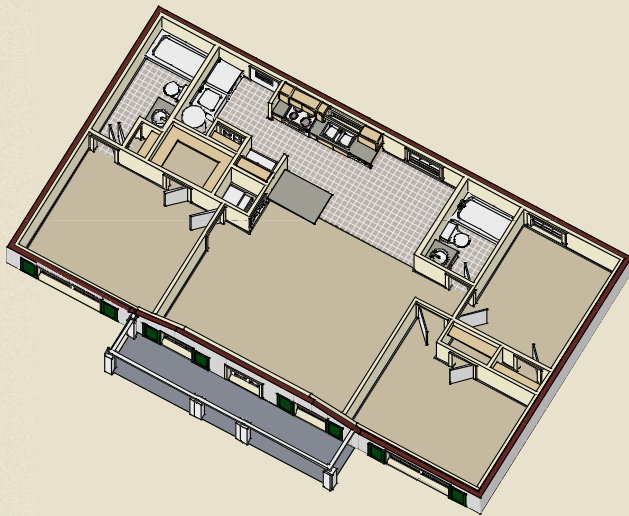
More of Everything

Hartford

The Hartford uses every square foot to its best advantage. It features a large and gracious family room with a view through the dining area to the backyard. The kitchen opens onto the dining area and has a breakfast bar which connects to the family room. There is a convenient pantry in the utility room, adjacent to the kitchen. The large master bedroom, separated from the other two for privacy, has a walk-in closet and private bath.



1,114 sq. ft.



Photos may include optional features.

AL
251.666.3950 | 800.489.1014

MS
228.687.1143 | 877.410.6175

FL
850.477.0006 | 866.775.0006

heritagehomesfamily.com