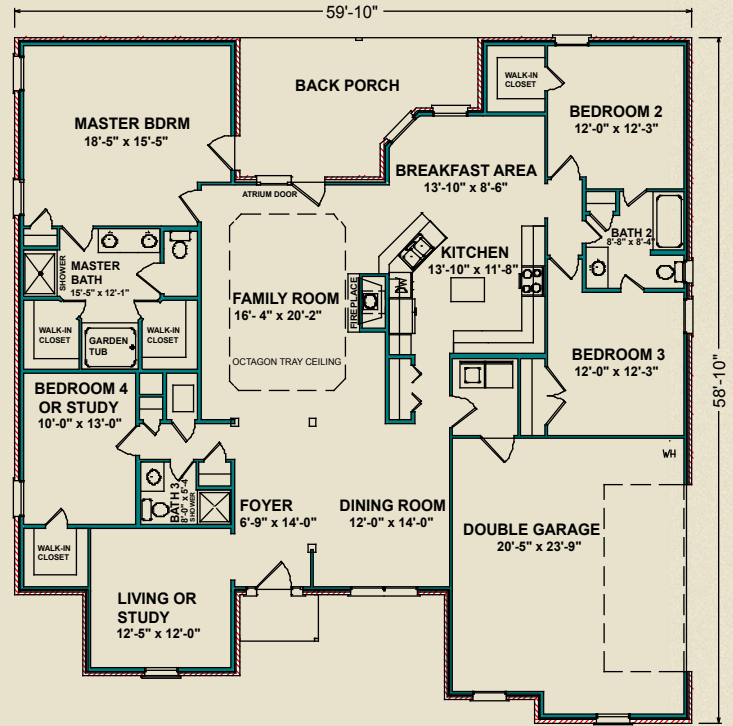




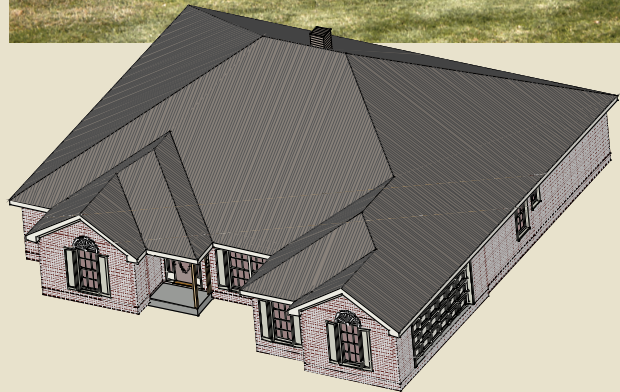
More of Everything

## Kensington

The 2,472-square-foot Kensington is designed for larger families and can be easily converted into a five-bedroom home. The open layout in the common areas—family room, dining room, breakfast area and kitchen—encourages family gatherings in spacious but cozy surroundings. There are large closets in every one of the comfortably sized bedrooms with three bathrooms located within only a few feet from each bedroom. The master bedroom has its own doorway to the back porch and features a large bathroom with a garden tub, two walk-in closets, a double vanity, a stand-alone 3' x 4' shower, and a separate water closet. The curb appeal of the Kensington makes your home stand out in your neighborhood with the attractive roof design, two offset gables and an energy-efficient brick exterior.



2,472 sq. ft.



Photos may include optional features.

AL  
251.666.3950 | 800.489.1014

MS  
228.687.1143 | 877.410.6175

FL  
850.477.0006 | 866.775.0006

[heritagehomesfamily.com](http://heritagehomesfamily.com)