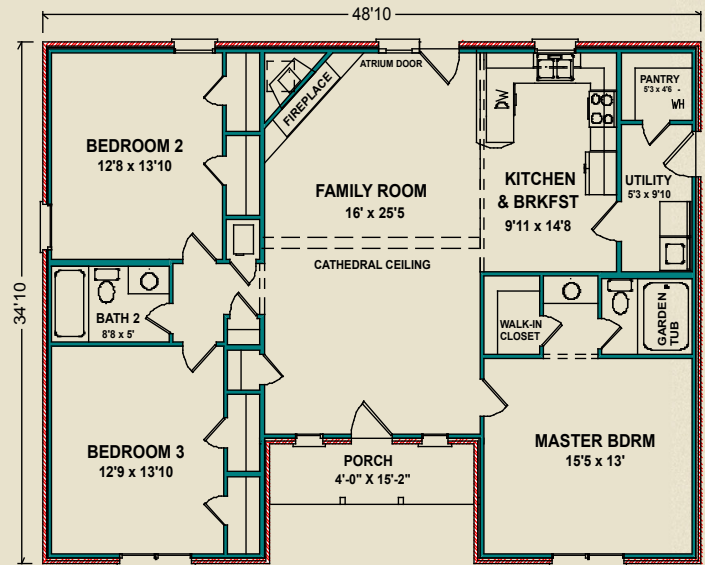




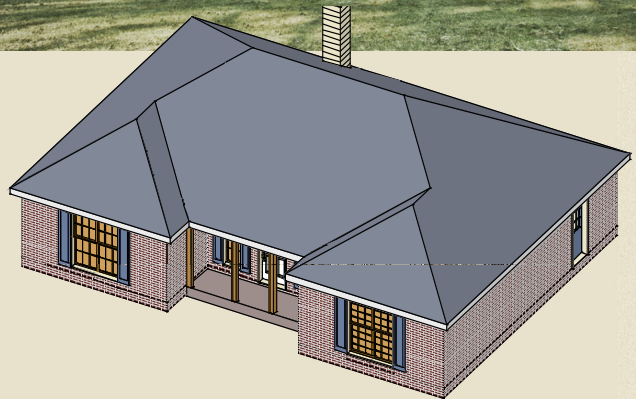
More of Everything

## McGregor

The McGregor plan opens to a large family room with high cathedral ceiling, inviting corner fireplace and atrium doors to the exterior. The spacious and efficient U-shaped kitchen has a bar overlooking the family room and connects to the large utility and pantry. The utility room can also serve as a convenient mudroom on rainy days. Two bedrooms have double closets, and a walk-in closet can be found in the master bedroom. The master bath features a garden tub.



1,579 sq. ft.



Photos may include optional features.

AL  
251.666.3950 | 800.489.1014

MS  
228.687.1143 | 877.410.6175

FL  
850.477.0006 | 866.775.0006

[heritagehomesfamily.com](http://heritagehomesfamily.com)