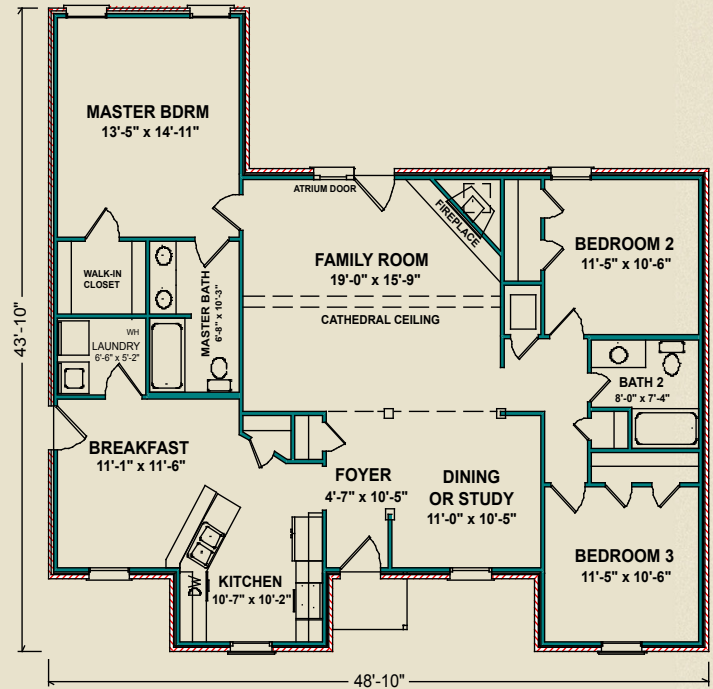




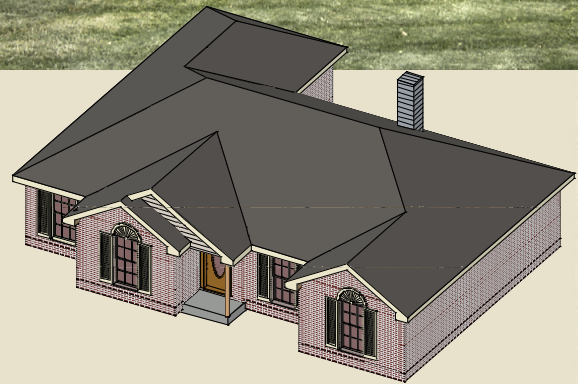
More of Everything

Stonebrook

The new Stonebrook combines beauty, efficiency and luxury in the same plan. The multi-level roofline is distinctive. The kitchen is the optimal design for saving steps and time. The modern angled counter between the kitchen and breakfast area keeps the cook "part of the action" and makes meal preparation enjoyable family time. The kitchen entry means convenient offloading of groceries and supplies where they are used and stored. The master suite features a large walk-in closet and dual vanities to prevent delays on busy mornings. The dramatic cathedral ceiling and inviting corner fireplace contribute to this attractive design.



1,640 sq. ft.



Photos may include optional features.

AL
251.666.3950 | 800.489.1014

MS
228.687.1143 | 877.410.6175

FL
850.477.0006 | 866.775.0006

heritagehomesfamily.com