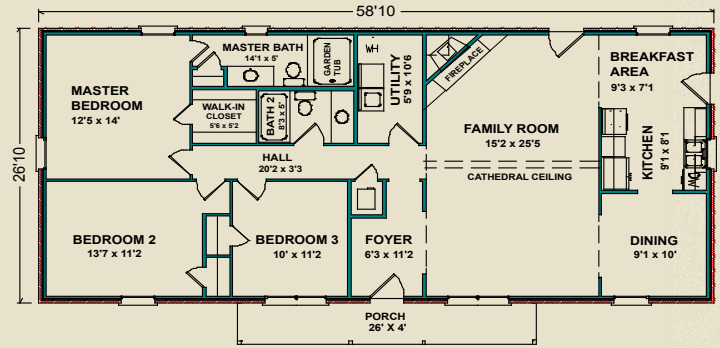




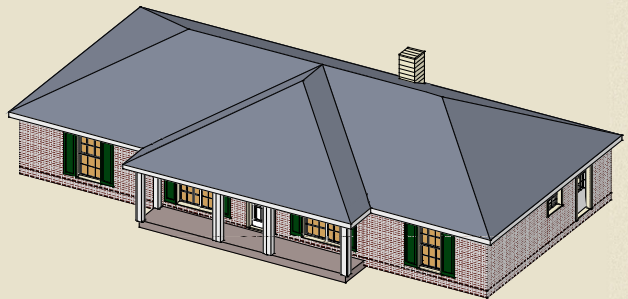
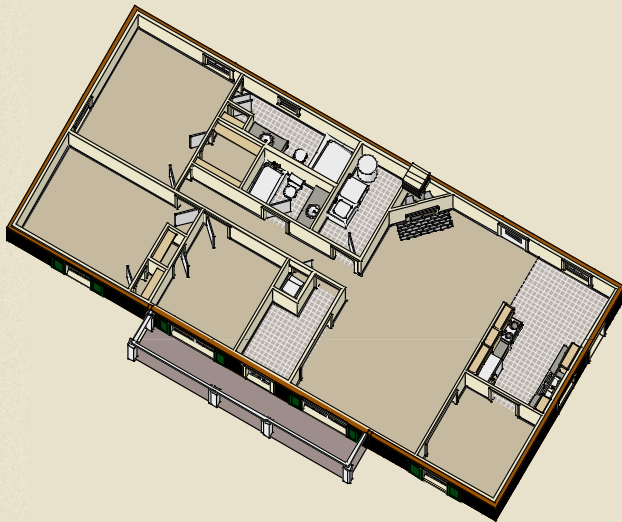
More of Everything

## Hampton

The Hampton's focal point is its dramatically large family room with its lofty cathedral ceiling, inviting corner fireplace and easy access to the outside. The breakfast area off the open kitchen has access to the exterior for quick unloading of groceries. The large master bedroom features a walk-in closet, and the master bath has a garden tub and linen closet. The large, centrally-located utility room provides extra storage space.



1,575 sq. ft.



Photos may include optional features.

AL  
251.666.3950 | 800.489.1014

MS  
228.687.1143 | 877.410.6175

FL  
850.477.0006 | 866.775.0006

[heritagehomesfamily.com](http://heritagehomesfamily.com)